



## **WR302**

Regular wirecore,  
revolutionary features



**VISOTTICA**  
GROUP

# WR302

Regular wirecore, revolutionary features

Vintage hinge for acetate and combination frames

## FEATURES

### JOINT SYSTEM

5 joints (3.8 mm · 5.0 mm)  
3 joints (3.0 mm)

### SCREWS

VIT screw

### TEMPLE CLOSURE

perfect symmetry

## PERFORMANCES

### BENDING RESISTANCE

min. 10 complete cycles  $\pm 15^\circ$   
min. 3 complete cycles  $\pm 30^\circ$

### TORSION RESISTANCE

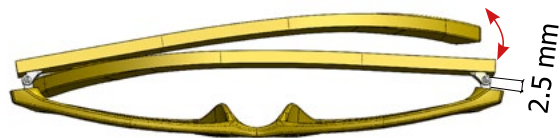
min. 35 complete cycles  $\pm 10^\circ$



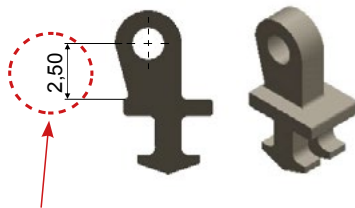
# PERFORMANCE COMPARISON

between classic temple closure and WR302 temple closure

## CLASSIC TEMPLE CLOSURE

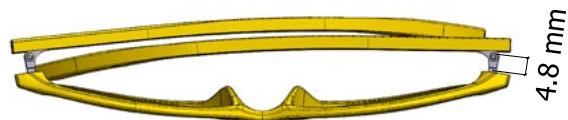


The front part of the hinge is too short to allow a good closing frame position

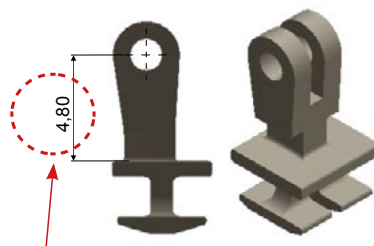


classic front hinge

## WR302 TEMPLE CLOSURE



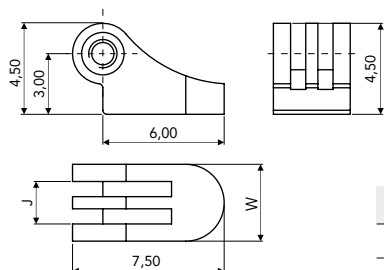
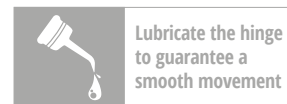
The higher WR302 front hinge ensures a perfect closure of the temples



WR302 front hinge

# WR302 (3.8) · 5 JOINTS

Regular Hinge and Wirecore  
for Acetate and Combination Frames

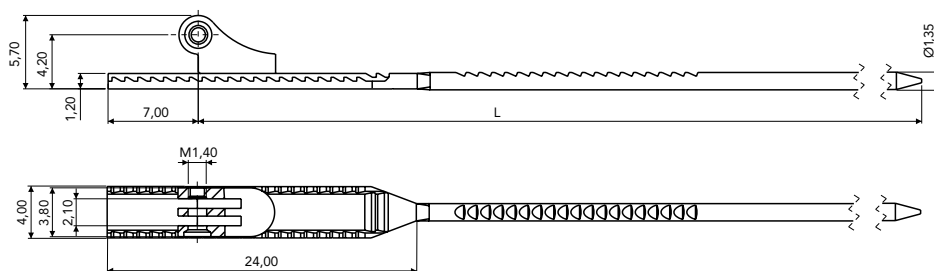


### SOLDERING FEMALE

W	J	CODE
3.80	2.10	03FEA0650A1BY0

Material: **Nickel silver**

### WIRECORES

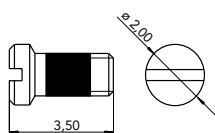


### WIRECORE

L	CODE
128	03WRB070228BN0
133	03WRB070233BN0

Material: **Nickel silver**

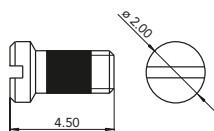
### SCREWS



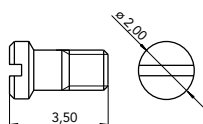
### VIT SCREW M1.40

W	CODE
3.80	07VI20045029

Material: **Stainless steel**  
**Visottica Injection Technology**



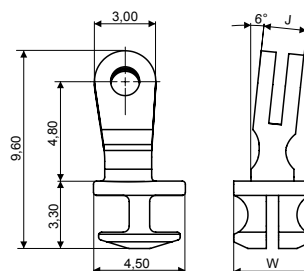
### ON REQUEST



### MINUS SCREW M1.40

Material: **Stainless steel**

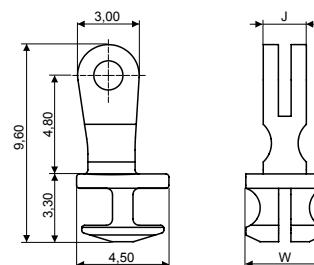
### HINGES



### 90° INSERT HINGE

W	J	CODE
3.80	2.10	03MACB581A2BN0

Material: **Nickel silver**  
**HIGH VERSION ADJUSTABLE**  
**6° SLANTED ANGLE**



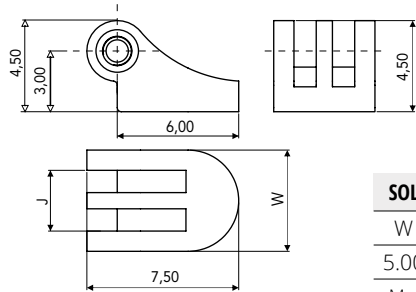
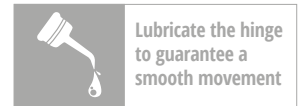
### 90° INSERT HINGE

W	J	CODE
3.80	2.10	03MACB580A2BNX

Material: **Nickel silver**  
**HIGH VERSION ADJUSTABLE**

# WR302 (5.0) · 5 JOINTS

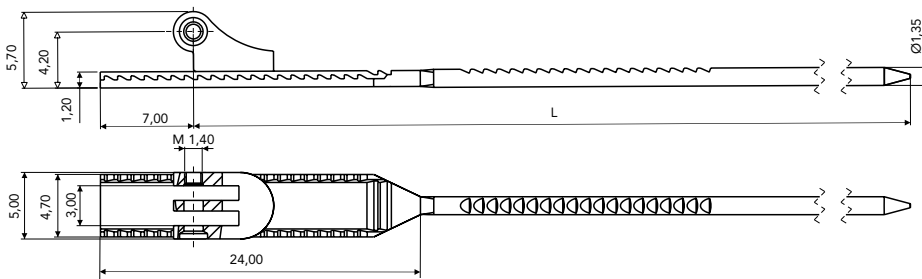
Regular Hinge and Wirecore  
for Acetate and Combination Frames



SOLDERING FEMALE		
W	J	CODE
5.00	3.00	03FEA0649A1BY0

Material: **Nickel silver**

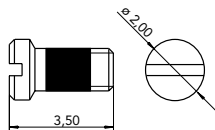
## WIRECORES



WIRECORE	
L	CODE
128	03WRB070328BN0
133	03WRB070333BN0

Material: **Nickel silver**

## SCREWS

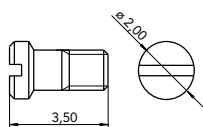


### VIT SCREW M1.40

W	CODE
5.00	07V120055009

Material: **Stainless steel**  
**Visottica Injection Technology**

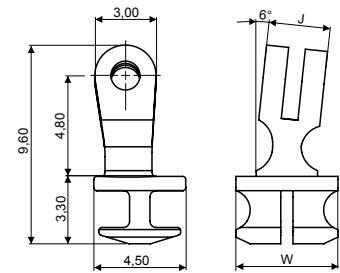
## ON REQUEST



### MINUS SCREW M1.40

Material: **Stainless steel**

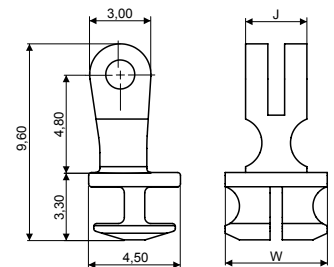
## HINGES



### 90° INSERT HINGE

W	J	CODE
5.00	3.00	03MACB583A2BN0

Material: **Nickel silver**  
**HIGH VERSION ADJUSTABLE**  
**6° SLANTED ANGLE**



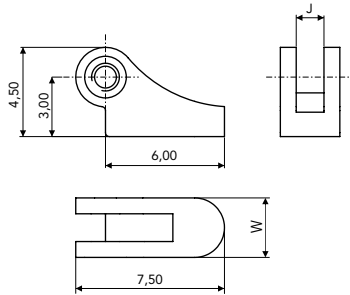
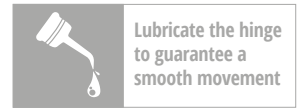
### 90° INSERT HINGE

W	J	CODE
5.00	3.00	03MACB582A2BNX

Material: **Nickel silver**  
**HIGH VERSION ADJUSTABLE**

# WR302 (3.0)

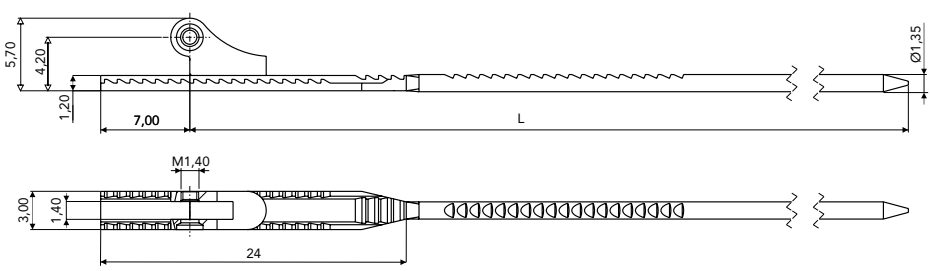
Regular Hinge and Wirecore  
for **Acetate and Combination Frames**



SOLDERING FEMALE		
W	J	CODE
3.00	1.40	03FEA0801A1BY0

Material: **Nickel silver**

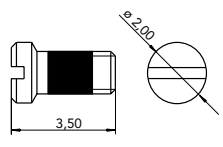
## WIRECORES



WIRECORE	
L	CODE
128	03WRB091828BN0
133	03WRB091833BN0

Material: **Nickel silver**

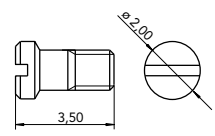
## SCREWS



VIT SCREW M1.40	
W	CODE
3.00	07VIA0804A1BYX

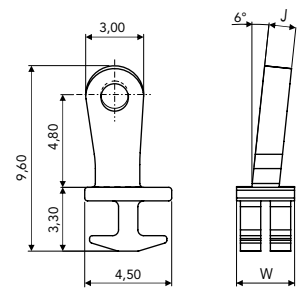
Material: **Stainless steel**  
**Visottica Injection Technology**

## ON REQUEST



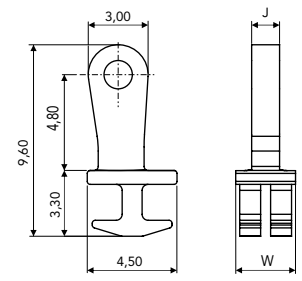
MINUS SCREW M1.40	
Material: <b>Stainless steel</b>	

## HINGES



90° INSERT HINGE		
W	J	CODE
2.60	1.40	03MAA0800A1BN0

Material: **Nickel silver**  
**HIGH VERSION 6° SLANTED ANGLE**



90° INSERT HINGE		
W	J	CODE
2.60	1.40	03MAA0799A1BNX

Material: **Nickel silver**  
**HIGH VERSION**

[sales@visotticagroup.com](mailto:sales@visotticagroup.com)



**Visottica Industrie S.p.a.**

Via Vecchia Trevigiana, 11  
31058 Susegana  
(Treviso), Italy  
Tel +39 0438 6551  
Fax +39 0438 450 855  
sales@visotticagroup.com

**O'Reilly Industrial Ltd.**

Rm 302, Shui Hing Centre,  
13 Sheung Yuet Road,  
Kowloon Bay, Kowloon, Hong Kong  
Tel +852 2796 6010  
Fax +852 2796 4631  
sales@visotticagroup.com

**COMOTEC Optical Products (Dongguan) Ltd.**

No. 23, Weijian Road,  
ChaShan Town, Dongguan City  
Guangdong Province, China 523380  
Tel +86 769 8233 9955  
Fax +86 769 8233 9977  
sales@visotticagroup.com

**Ookii S.r.l.**

Via Industrie, 3 Rasai  
32030 Seren del Grappa  
(Belluno), Italy  
Tel +39 0439 447 08  
Fax +39 0439 448 038  
sales@visotticagroup.com

**Matrix S.r.l.**

Via Industrie, 13 Rasai  
32030 Seren del Grappa  
(Belluno), Italy  
Tel +39 0439 448 388  
Fax +39 0439 448 217  
sales@visotticagroup.com

**Eurodecori S.r.l.**

Zona Artigianale 11  
32038 Quero Vas  
(Belluno), Italy  
Tel +39 0439 787 788  
sales@visotticagroup.com